

Land Administration Domain Modell

Workshop

Finland

Country Profile

Mr. Markku Markkula
March 16, 2017 Delft
National Land Survey of Finland



Statistics of Finland

- ❑ 5,4 million inhabitants
- ❑ 15,8 inhabitants per km²
(40,5 per square mile)
- ❑ 2,7 million real estate units
- ❑ 2,6 million building and dwellings
- ❑ 0,6 million enterprises and corporations
- ❑ 3,7 million vehicles



ISO/LADM shortly

- ❑ ISO work (19152) where the objective is to provide an international standard for the information used in the land administration domain
- ❑ Tries to provide a terminology for land administration, to provide a basis for the development of systems and to enable communication by using a jointly shared vocabulary
- ❑ Conceptual schema which consists of object which models parties, basic administrative units and spatial units and rights, responsibilities and restrictions
- ❑ Party data, address data, valuation data, land use data, archive data and taxation data are outside the scope

Backgrounds of Finnish cadastre shortly

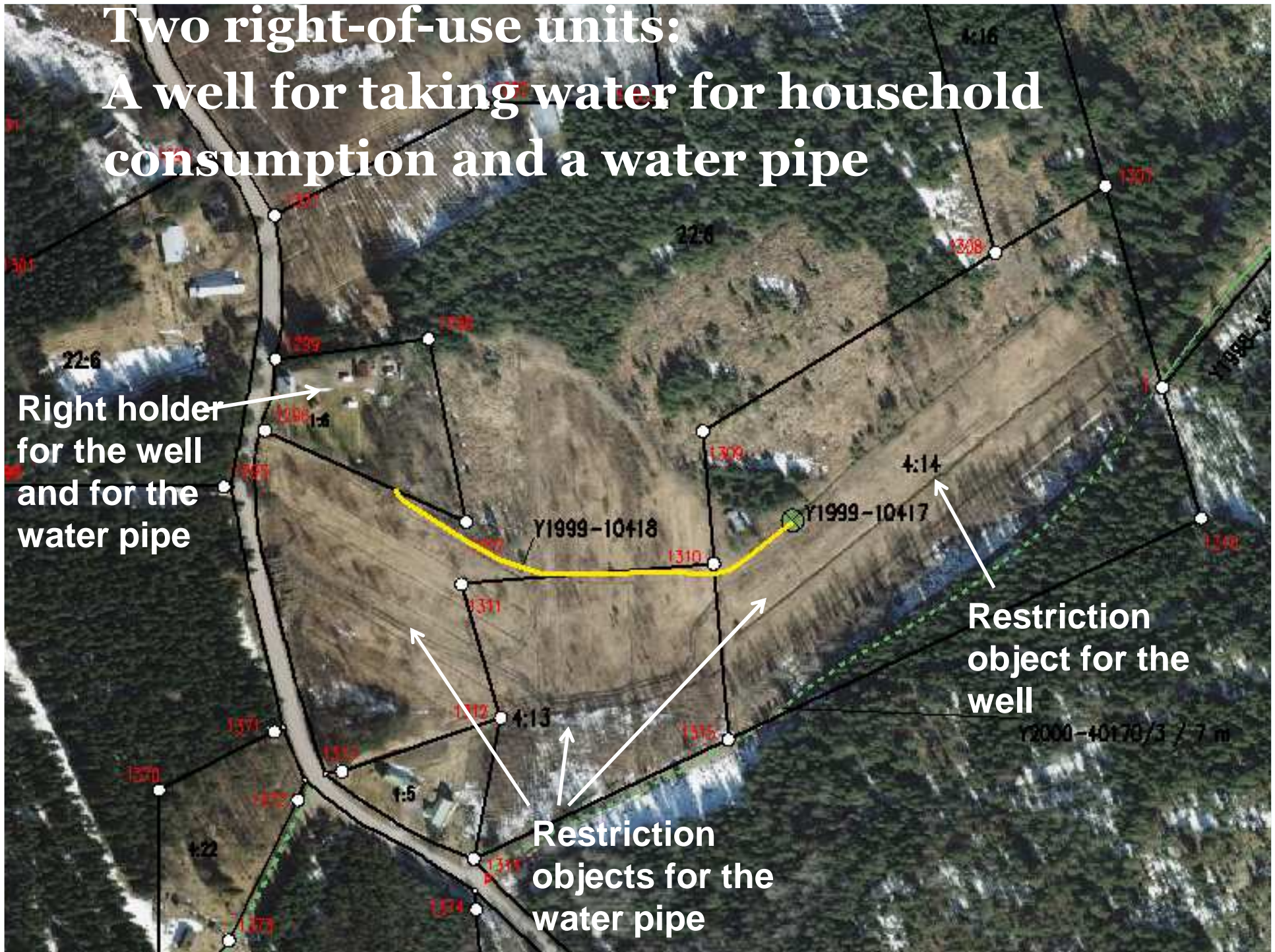
- ❑ In Finland all cadastral information - both map and attribute data - are registered in one integral object-oriented database (started 1998, renewed 2005) managed by the National Land Survey
- ❑ The main objects in the cadastre include basic property units and right-of-use units with the geometry related to them. Basic property unit is the basic unit of registration and it can consist of none, one or many parcels
- ❑ Since the beginning of 2010 the National Land Survey has been responsible for registering titles and mortgages
- To summarize: LADM supports the idea of administrative units with unique identifiers. It does not directly support legally registered relationships between different types of administrative units but favours geometry overlay.

Two right-of-use units: A well for taking water for household consumption and a water pipe

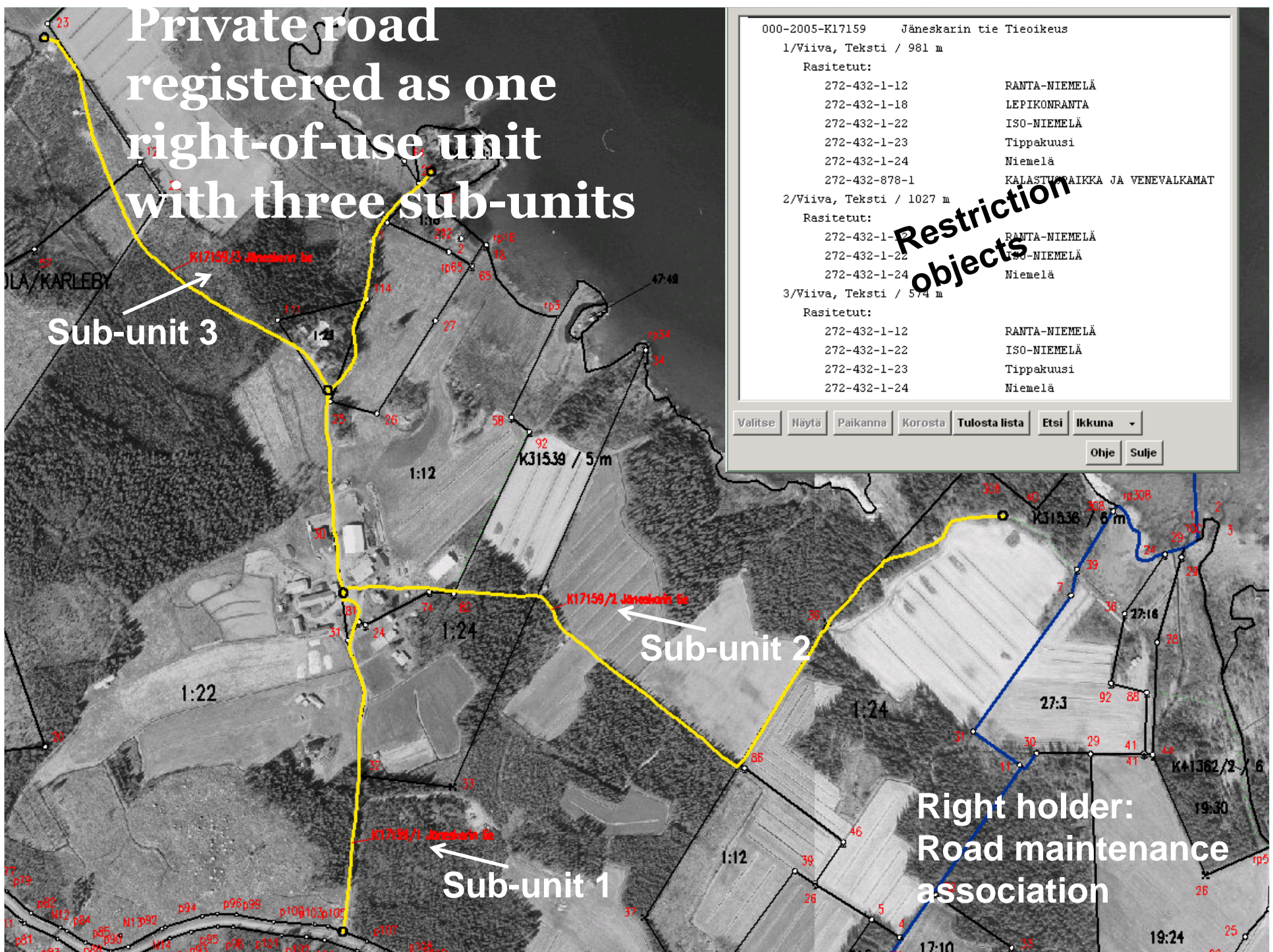
Right holder
for the well
and for the water pipe

Restriction
object for the
well

Restriction
objects for the
water pipe



Private road registered as one right-of-use unit with three sub-units



000-2005-K17159 Jäneskarin tie Tieoikeus
 1/Viiva, Teksti / 981 m
 Rasitetut:
 272-432-1-12 RANTA-NIEMELÄ
 272-432-1-18 LEPIKONRANTA
 272-432-1-22 ISO-NIEMELÄ
 272-432-1-23 Tippakuusi
 272-432-1-24 Niemelä
 272-432-878-1 KALASTUSPAIKKA JA VENEVALKAMAT
 2/Viiva, Teksti / 1027 m
 Rasitetut:
 272-432-1-12 RANTA-NIEMELÄ
 272-432-1-22 ISO-NIEMELÄ
 272-432-1-24 Niemelä
 3/Viiva, Teksti / 574 m
 Rasitetut:
 272-432-1-12 RANTA-NIEMELÄ
 272-432-1-22 ISO-NIEMELÄ
 272-432-1-23 Tippakuusi
 272-432-1-24 Niemelä

Valitse Näytä Paikanna Korosta Tulosta lista Etsi Ikkuna
 Ohje Sulje

Restriction objects

Sub-unit 3

Sub-unit 2

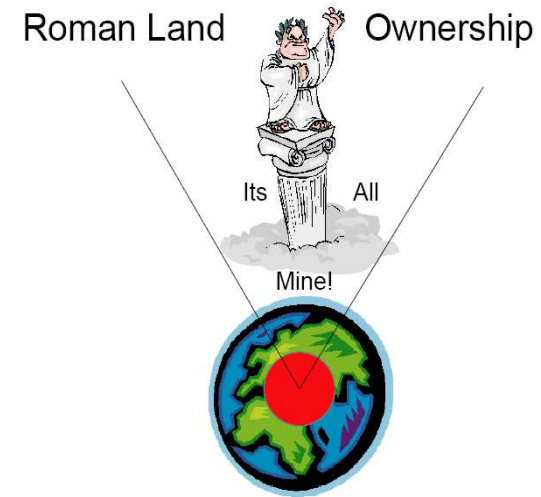
Sub-unit 1

Right holder:
Road maintenance association

SOME VIEWS

To summarize: LADM supports the idea of administrative units with unique identifiers. It does not directly support legally registered relationships between different types of administrative units but favours geometry overlay.

- Right – of – Use –units are important for Finnish Cadastral System (=Property – to – Property –rights)
- Person (party) – to – Property Rights are not mainly included in Cadaster



Future Cadastre 2035

- Accurate, Coordinate-based, Digitized
- Ubiquitous; incl. all easements, right of ways etc.
- Integrated
- 3–5 dimensioned
- Crowdsourcing, Internet of Things (IoT) – Smart Cities
- Building Information Modelling BIM, Laser Scanning
- Utility Mapping – digital underground visualisations
- Open Access – balanced with individual privacy
- (source: Lesley Arnold WB 2016 Washington D.C.)



Thank you!

www.nls.fi

