



**AGH UNIVERSITY OF SCIENCE
AND TECHNOLOGY**

Researches towards Polish country profile based on ISO 19152

Jarosław Bydłosz

**Faculty of Mining Surveying and Environmental Engineering
Department of Geomatics**

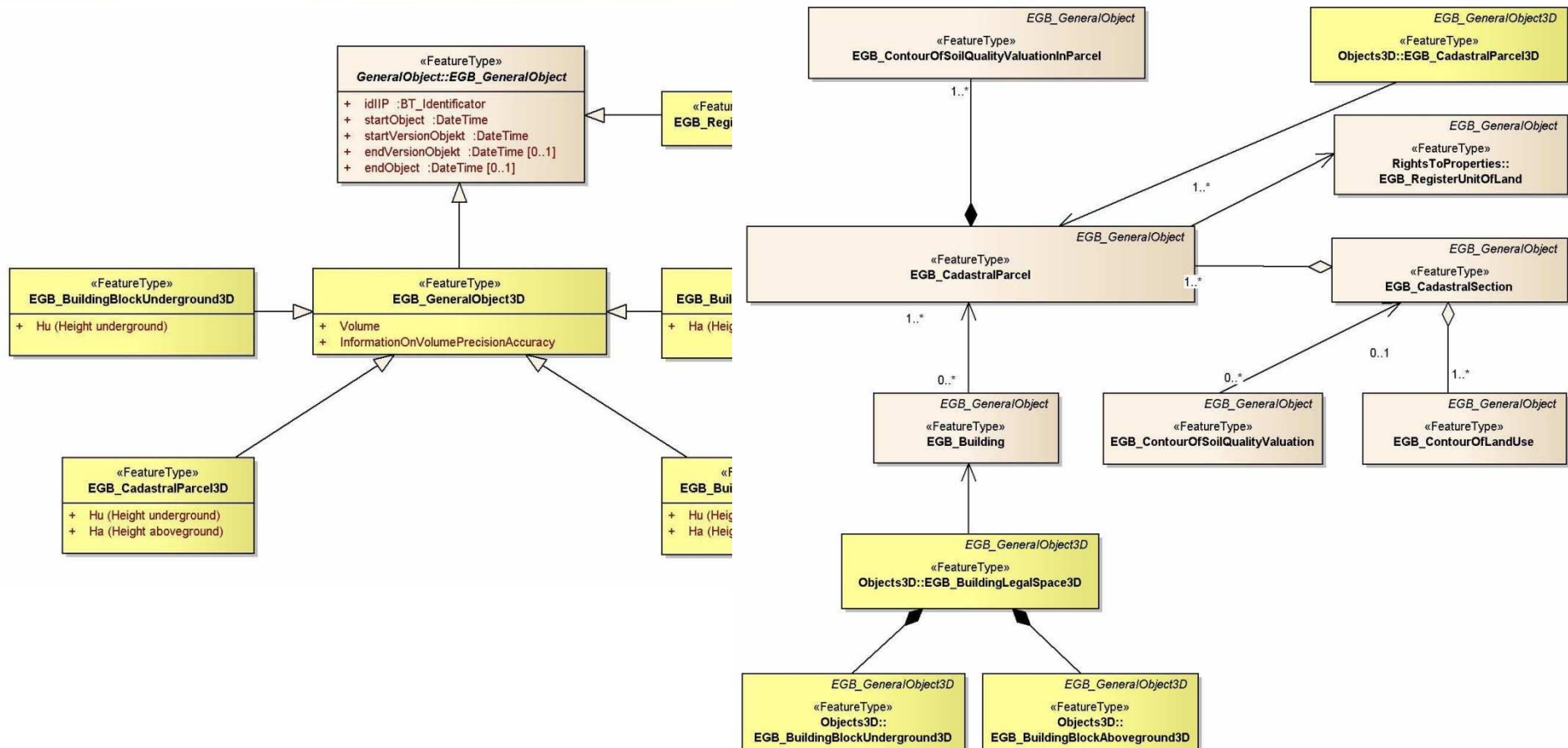
The 6th Land Administration Domain Model (LADM) Workshop. Delft, 16th March 2017



AGH Land and Building Cadastre in Poland at glance

- Two systems containing land information - Cadastre (parcels, buildings, premises/apartments) and Land Register (real estates)
- Cadastral data (approximately):
 - Cadastral parcels - 36 mln
 - Buildings – 17.7 mln
 - Premises/apartments (independent real estates) - 5.4 mln
- The conceptual model of Polish cadastral data consists of UML application schema, a catalogue of objects and GML application schema. The model consists of
 - 71 classes
 - grouped in 8 thematic packages and
 - interrelations between them presented on 16 diagrams.
- Cadastral data used in creation of „The Integrated Real Estate Information System (ZSiN)” integrating in „one functionality” cadastre and land register, with information transfer between cadastral offices and courts’ land register departments in XML base format

3D objects implementation into cadastral model



Possible future works (chosen previous papers):

- **Going towards creating the country profile based on LADM** (only for cadastre or for land registry, as well)

Bydłosz J.: *The application of the Land Administration Domain Model in building a country profile for the Polish cadastre*. Land Use Policy. Nr 49 (2015)

- **Integrating 3D solutions within cadastral model and profile**

Bydłosz J.: *Developing the Polish cadastral model towards 3D cadastre*. 5th International FIG 3D Cadastre Workshop. 18-20 October 2016, Athens, Greece

- **Building information infrastructure basing on LADM** (using various registers):

Gózdź, K., van Oosterom, P.: *Developing the information infrastructure based on the LADM - the case of Poland*. Survey Review (2015)

- **Applying CityGML in cadastre/land administration**

Gózdź K., Pachelski W., van Oosterom P., Coors V.: *The Possibilities of Using CityGML for 3D Representation of Buildings in the Cadastre*. 4th International Workshop on 3D Cadastres. 9-11 November 2014, Dubai, United Arab Emirates

- **Implementing „The Integrated Real Estate Information System (ZSiN)” at the local level**

The Council of Ministers Regulation on the Integrated Real Estate Information System (ZSiN) from 17th of January 2013.