

The Role of LADM in Configurable Geographic Information Systems

Katherine Smyth

What Is Geospatial Infrastructure?

... GIS at Scale



Content

Foundational ...
... Directly Usable
and Services-Based

Integration

Leveraging Location ...
... and Technology

Mapping & Analytics

Geographic Sciences ...
... and Visualization

A Platform for Sharing ...
... and Collaboration

... and Solving
Problems Holistically

Implementation of a Geospatial Strategy

The Esri Method

Understand

- Mission / Purpose
- Goals & Objectives
- Success Criteria
- Challenges

Plan

- Processes & Workflows
- Information & Technology
- Workforce Capabilities
- Roadmap
 - Prioritized Activities

Act

1 Prepare

- Define
- Design
- Communicate

2 Implement

- Build
- Deploy
- Enable

4 Review

- Outcomes
- Utilization
- Usability

3 Operate

- Execute
- Monitor
- Support

Revisit



Geospatial Infrastructure Common Patterns of Use

Mapping & Visualization



Understand locations and relationships with maps and visual representations

Data Management



Collect, organize, and maintain accurate locations and details about assets and resources

Field Mobility



Manage and enable a mobile workforce to collect and access information in the field

Monitoring



Track, manage, and monitor assets and resources in real-time

Analytics



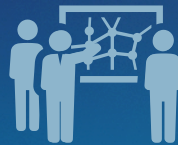
Discover, quantify, and predict trends and patterns to improve outcomes

Design & Planning



Evaluate alternative solutions and create optimal designs

Decision Support



Gain situational awareness, and enable information-driven decision making

Constituent Engagement



Communicate and collaborate with citizens and external communities of interest

Sharing & Collaboration



Empower everyone to easily discover, use, make, and share geographic information

The Patterns are Related

... and Build on one Another



Patterns Help Connect Technology with Business Needs



Connecting Technology to LADM



Land Tenure

Land Value

Land Use

Land Development



Land Administration Solution Overview

Land Administration Portal



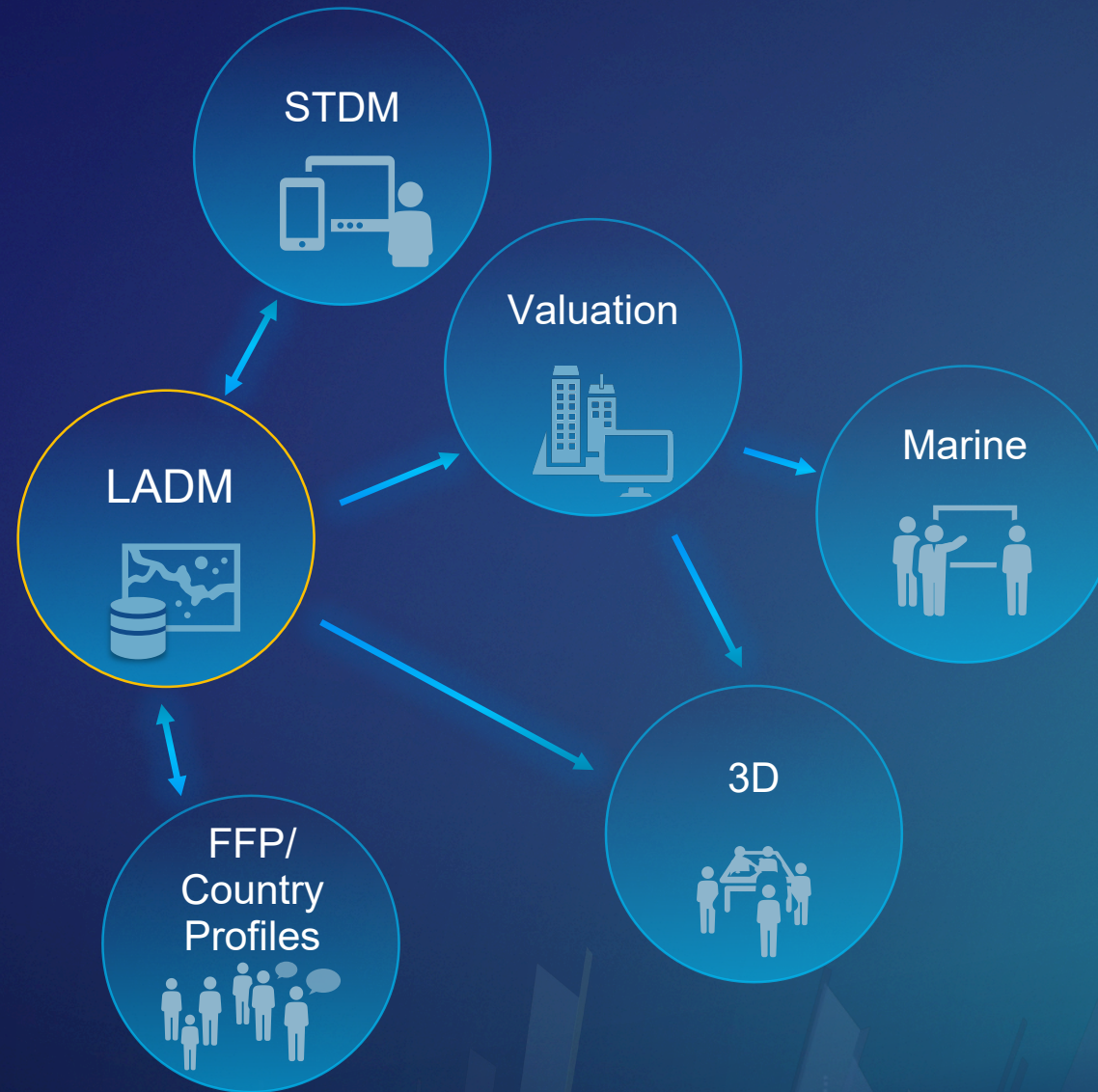
The Patterns are Related

... and Build on one Another



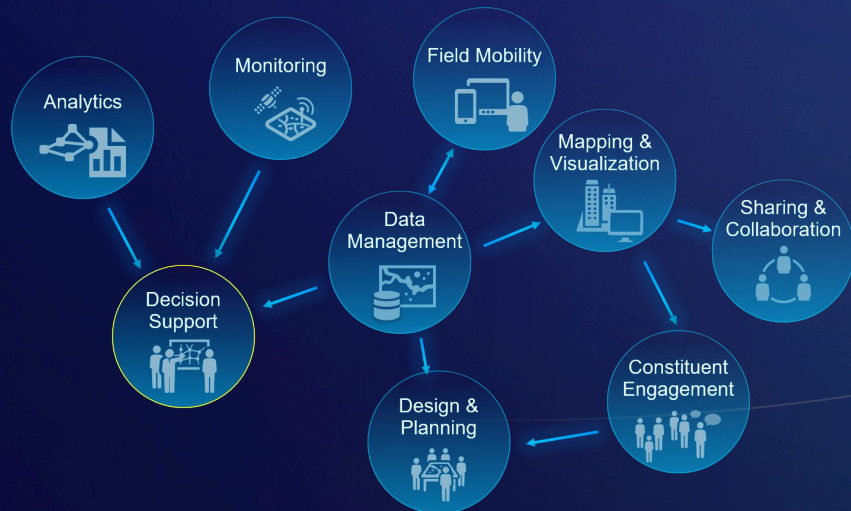
A Configurable LADM

LADM Edition II



Same LADM, More Possibilities


Access the new service and extend to suit your needs



Land Administration Domain Model

[Overview](#) [Data](#)

Edit Thumbnail



☆ Add to Favorites

Interpretation of the Land Administration Domain Model ISO 19152 Edit

Feature Layer (hosted) by Ksmyth_LandAdm

Created: Jun 13, 2019 Updated: Jun 13, 2019 View Count: 5

Description Edit

This interpretation of the LADM was created with two thoughts in mind: first, to make the model as country agnostic as possible and second, to make it as intuitive to use for spatial data recording and management as possible. With this in mind, the following decisions were made:

- Rights, Responsibilities and Restrictions were condensed into one table labeled Administrative
- Property attributes such as address/location and area were condensed into the Spatial Unit feature class
- Party Role Type was added into the Party table

This service can be exported for use in desktop software or copied to another ArcGIS Online organization and further modified to suit the needs of a project.

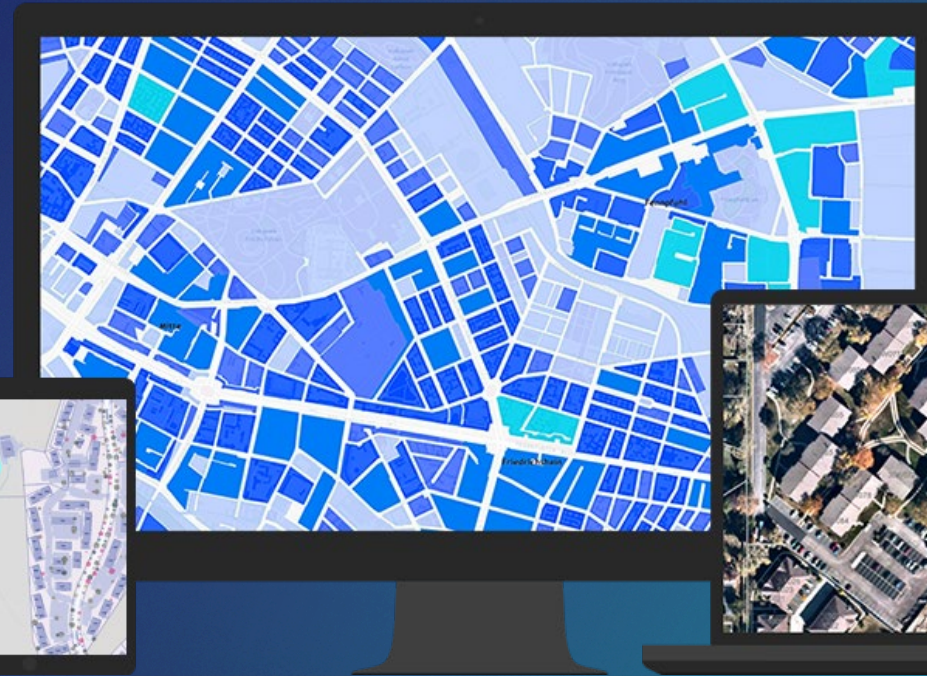
Look for a Valuation extension later this year!

Available now at esri-landadm.hub.arcgis.com

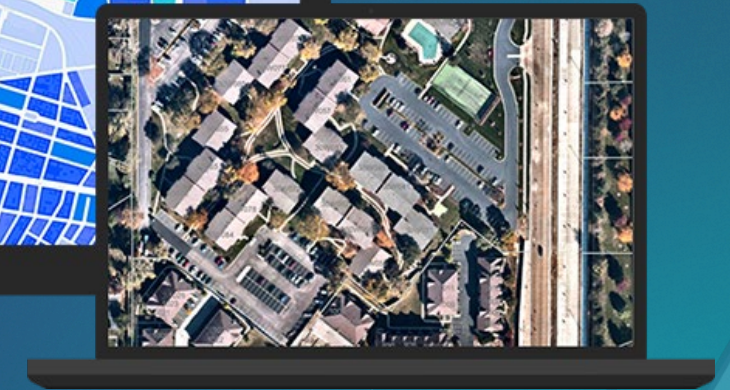
LADM in the Office or the Field

With Web Services, LADM is available anywhere on any device

Parcel Management



Field Data Collection



Registry Integration





esri

THE
SCIENCE
OF
WHERE