

# 3D CADASTER IN INDONESIA

Proposal for migration to 3D Cadastre Data Management System  
In Indonesian SDI



**Agung Indrajit, M.Sc**

PhD Candidate at ABE - TU Delft

**Sitarani Safitri, MT**

Center for SDI – ITB Bandung

# Agung Indrajit, M.Sc



## **2004-2006,2009-2016 (Geospatial Information Authority-Bogor)**

- Head of Division of Geospatial Data Management
- Head of Division of Fundamental Geospatial Data Standardization
- Senior Engineer at Geospatial Intelligence Unit
- Engineer at Earth Monitoring Projects

## **2007-2008 (Deutsche Luft Raumfahrt, Oberpfaffenhofen)**

- Part Time Database Developer for Satellite Imageries
- Full Time Geospatial Data Mining for Earthquake and Tsunami Modelling

## **2001-2004 (Chevron Texaco-Sumatra)**

- GIS Systems Developer

## **1999-2000 (Institute Technology of Bandung-Bandung)**

- Teaching and Research Assistant

**Master of Science from Technische Universitaet Muenchen 2008**

**Post Graduate Courses (UN CSSTEAP-India, UNSW-CSIRO Australia, ICPLST-Taiwan)**

**Bachelor from Institute Technology of Bandung 2000**

## **Past and Current Affiliation :**



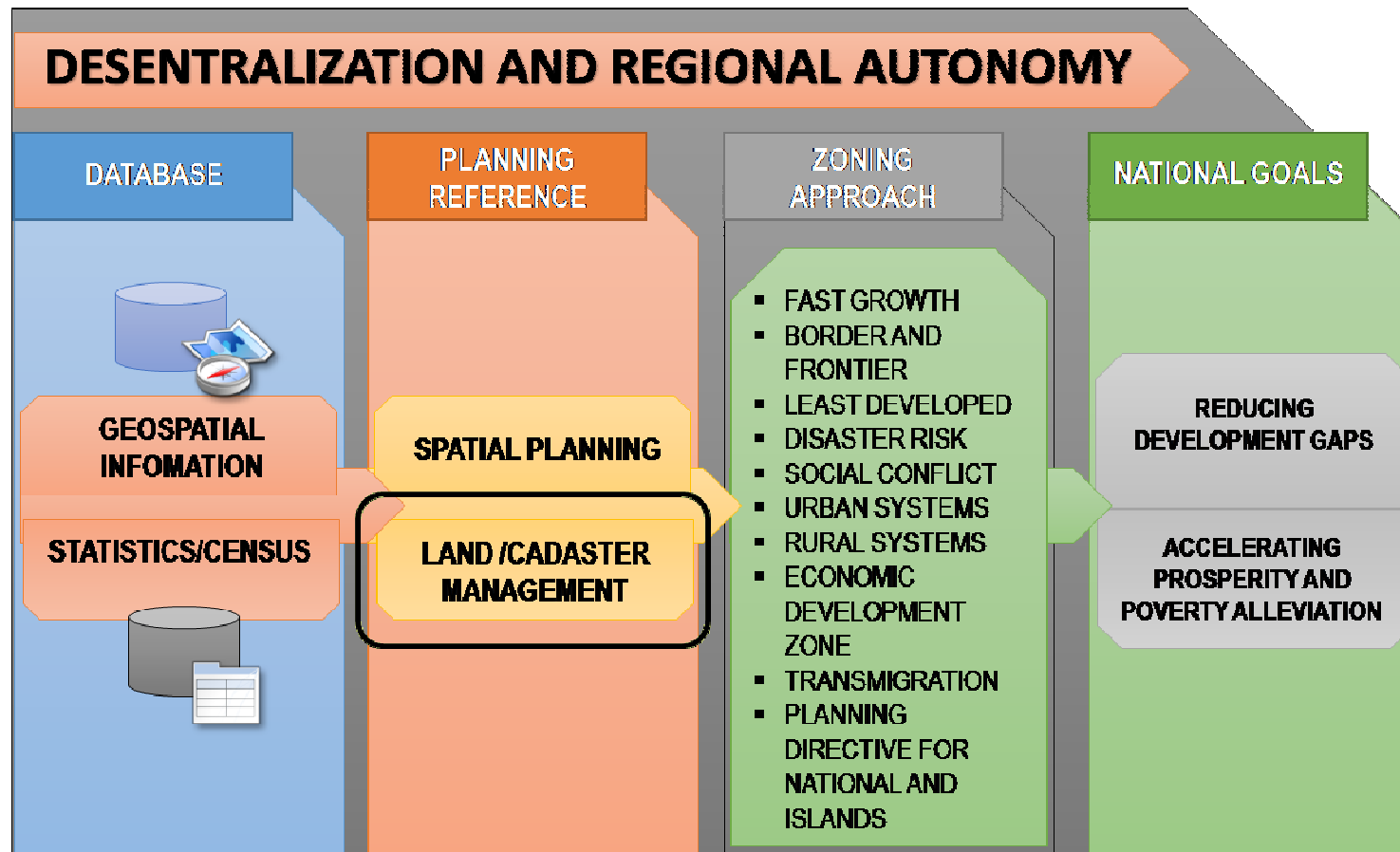
PUSAT  
INFRASTRUKTUR  
DATA SPASIAL



Research and Strategic Issues  
**IKATAN SURVEYOR INDONESIA**  
Indonesian Surveyors Association  
member of Fédération Internationale des Géomètres (FIG)

# Cadastral Information for Indonesia

## Importance to National Development 2014-2019



# Cadastral Stakeholder in Indonesia

## On Nationwide Policy

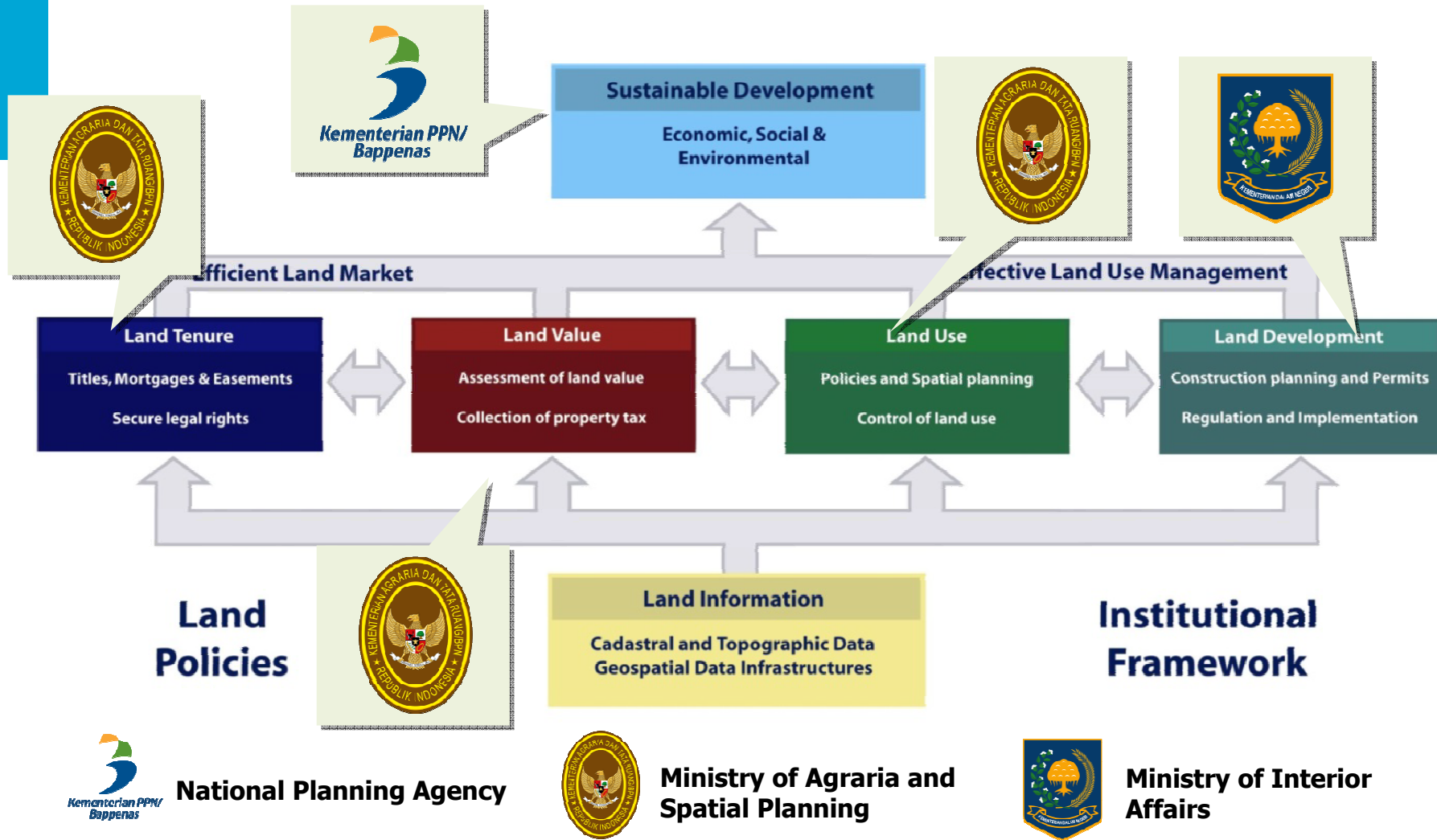


Fig. 2. Legal and Institutional framework (Enemark, 2014)

# Cadastral Stakeholder in Indonesia in Operational (City/Municipal)

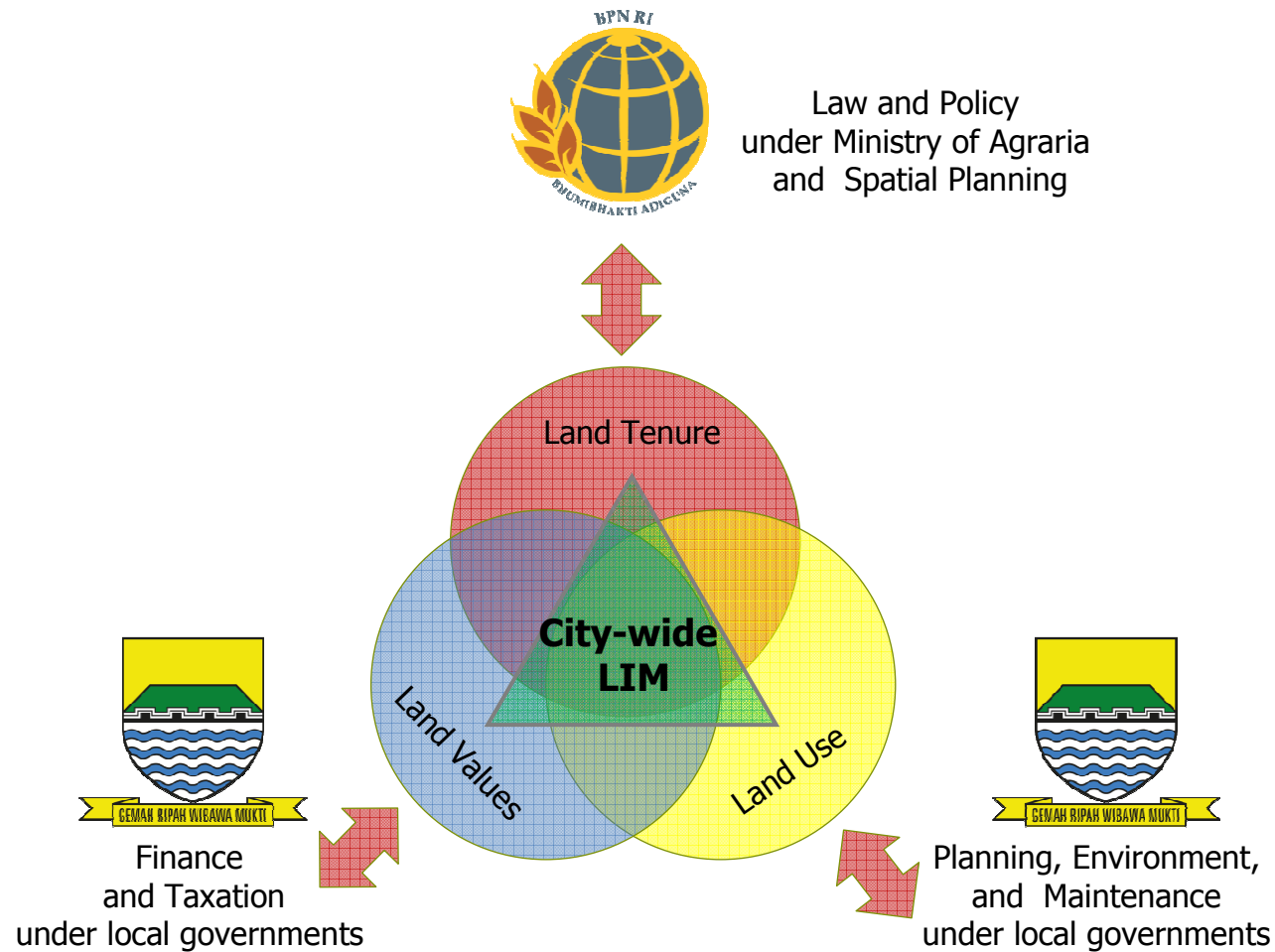


Fig 3. City-wide LIM for City of Bandung, status 2016  
(Adapted from FIG, 2002).

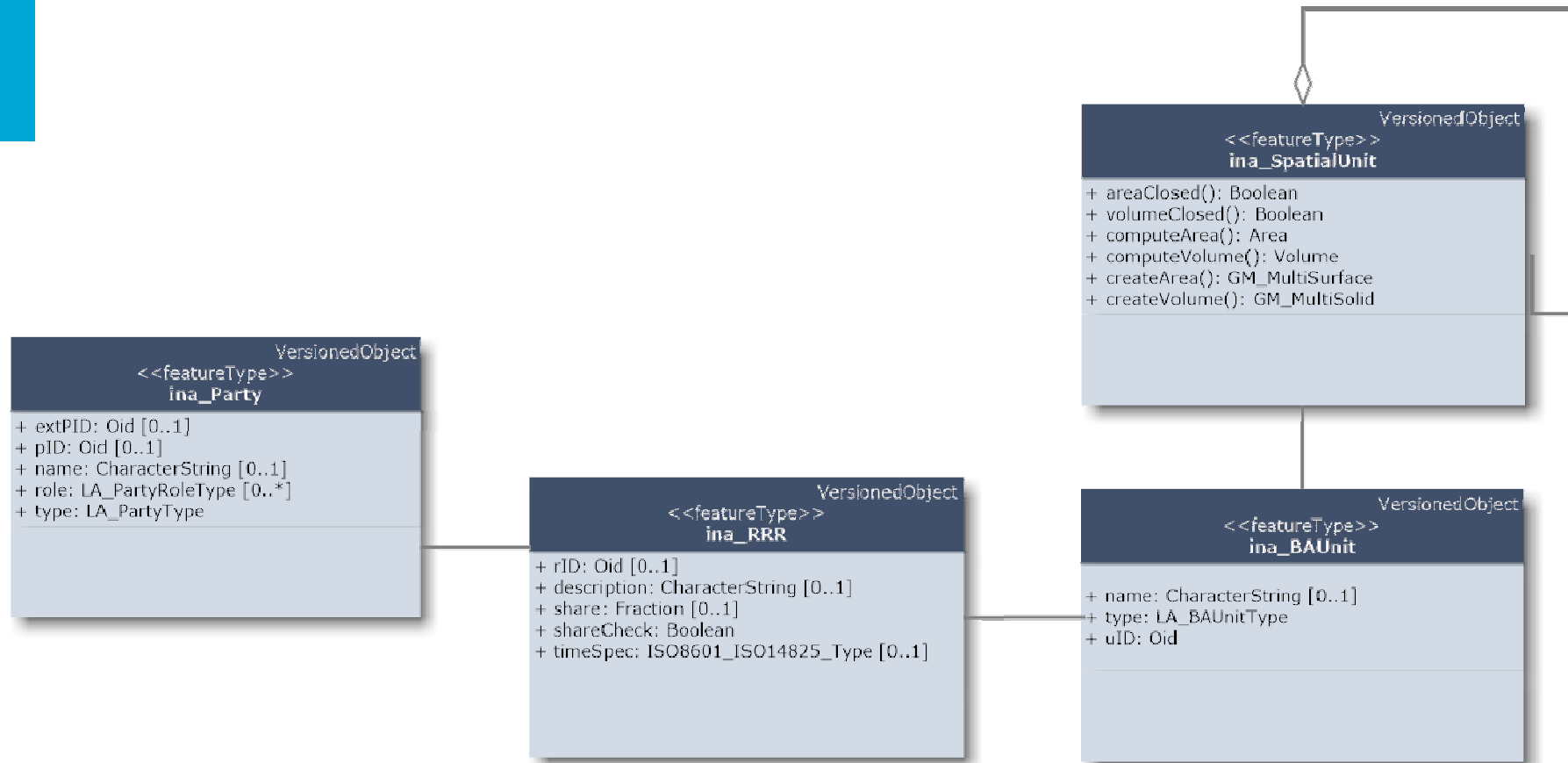
# Cadastral Data Management

## Migration to LADM

CLASS IN LADM	CLASS IN LAND REGISTRATION ACTIVITIES
<i>LA_Party, LA_GroupParty</i>	<ul style="list-style-type: none"> <li>• Land Owner (people, organizations)</li> <li>• Customer</li> </ul>
<i>LA_BAUnit</i>	<ul style="list-style-type: none"> <li>• Basic property unit</li> </ul>
<i>LA_RRR, LA_Right, LA_Restriction, LA_Responsibility</i>	<ul style="list-style-type: none"> <li>• Right</li> </ul>
<i>LA_SpatialUnit</i>	<ul style="list-style-type: none"> <li>• Parcel</li> <li>• 2DBuilding</li> <li>• 3DBuilding</li> </ul>
<i>VersionedObject</i>	<ul style="list-style-type: none"> <li>• VersionedObject</li> </ul>
<i>LA_Source</i> <i>LA_AdministrativeSource</i> <i>LA_SpatialSource</i>	<ul style="list-style-type: none"> <li>• Application</li> <li>• AdminDocuments</li> <li>• SurveyReports</li> </ul>

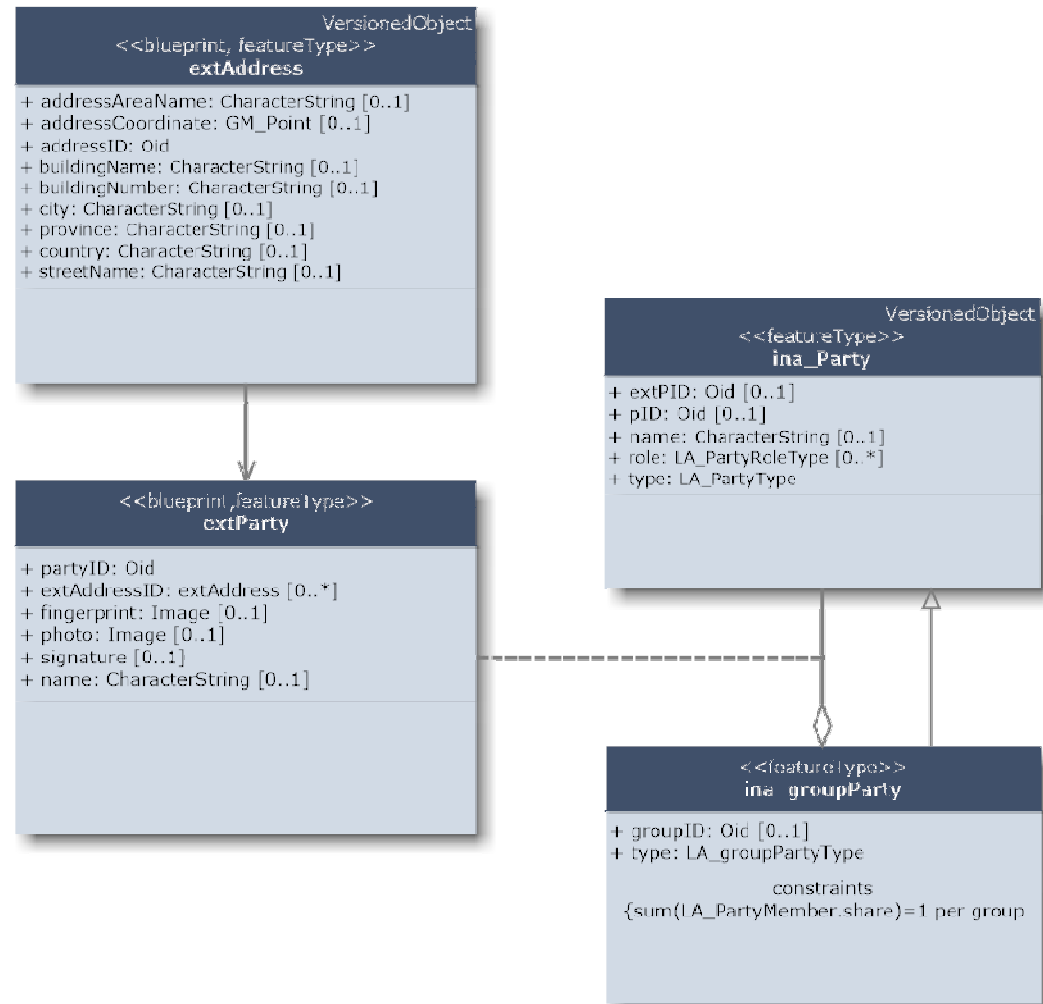
# Cadastral Data Management

## Indonesian Profile: Core



# Cadastral Data Management

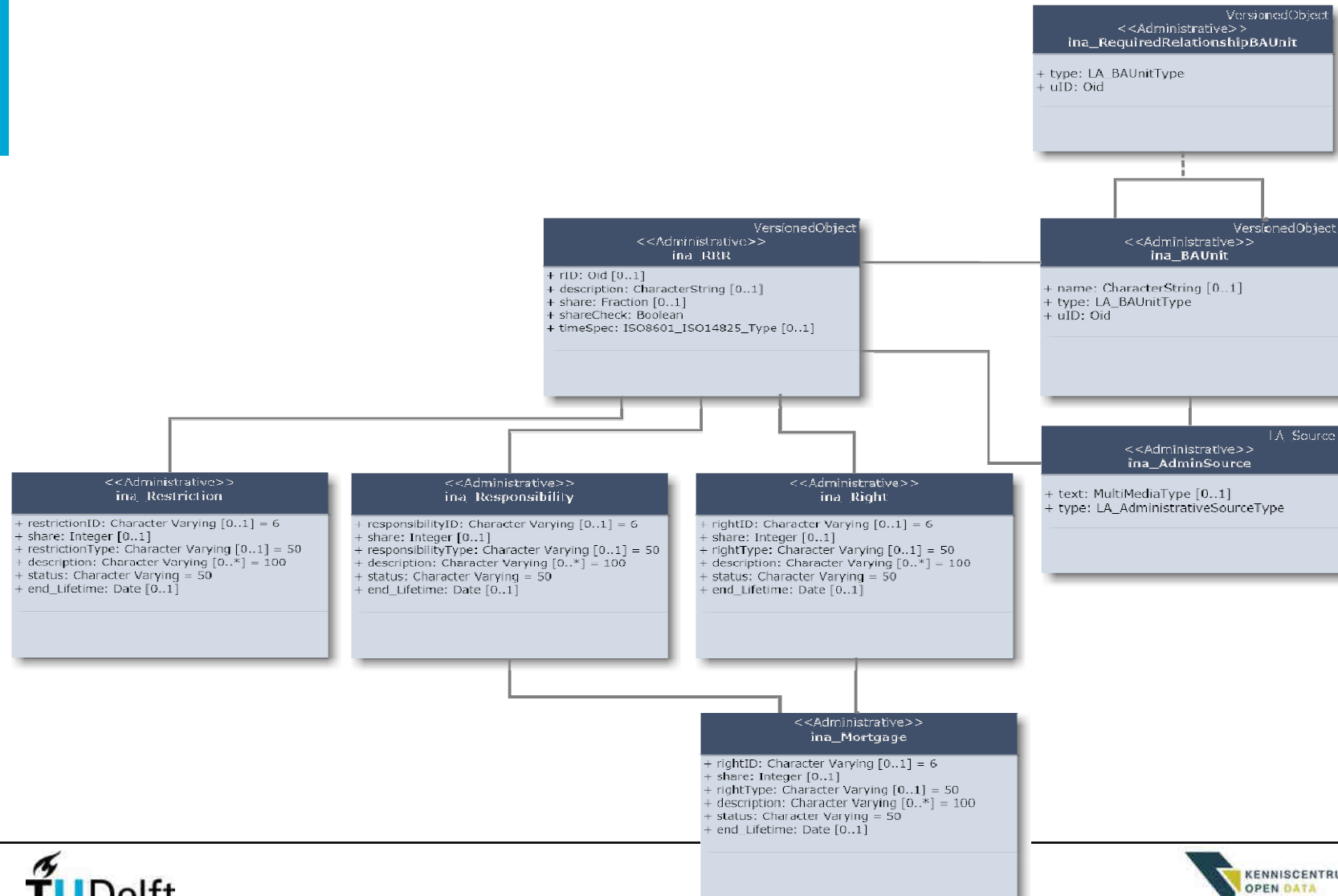
## Indonesian Profile: Party





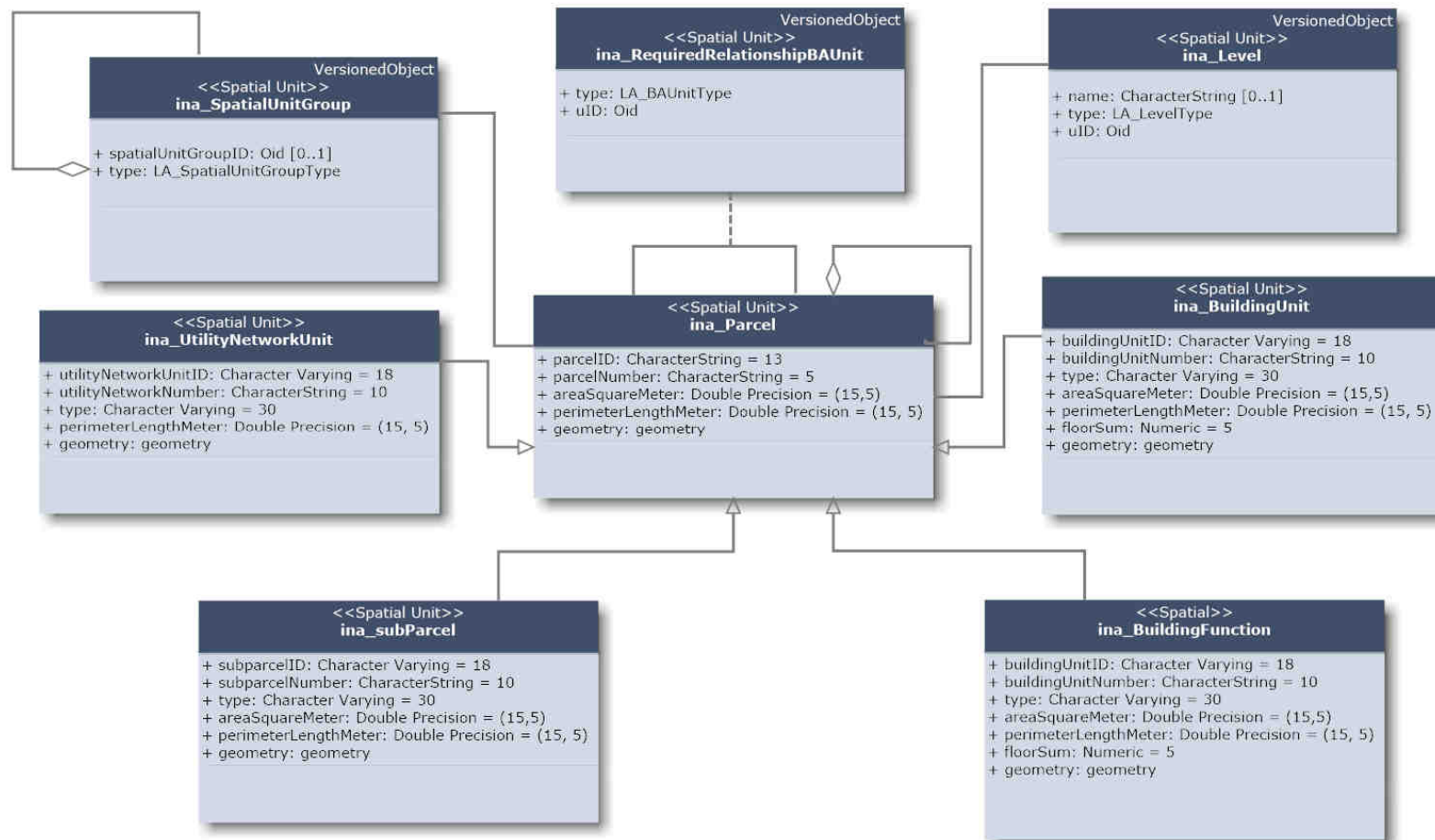
# Cadastral Data Management

## Indonesian Profile: Administrative



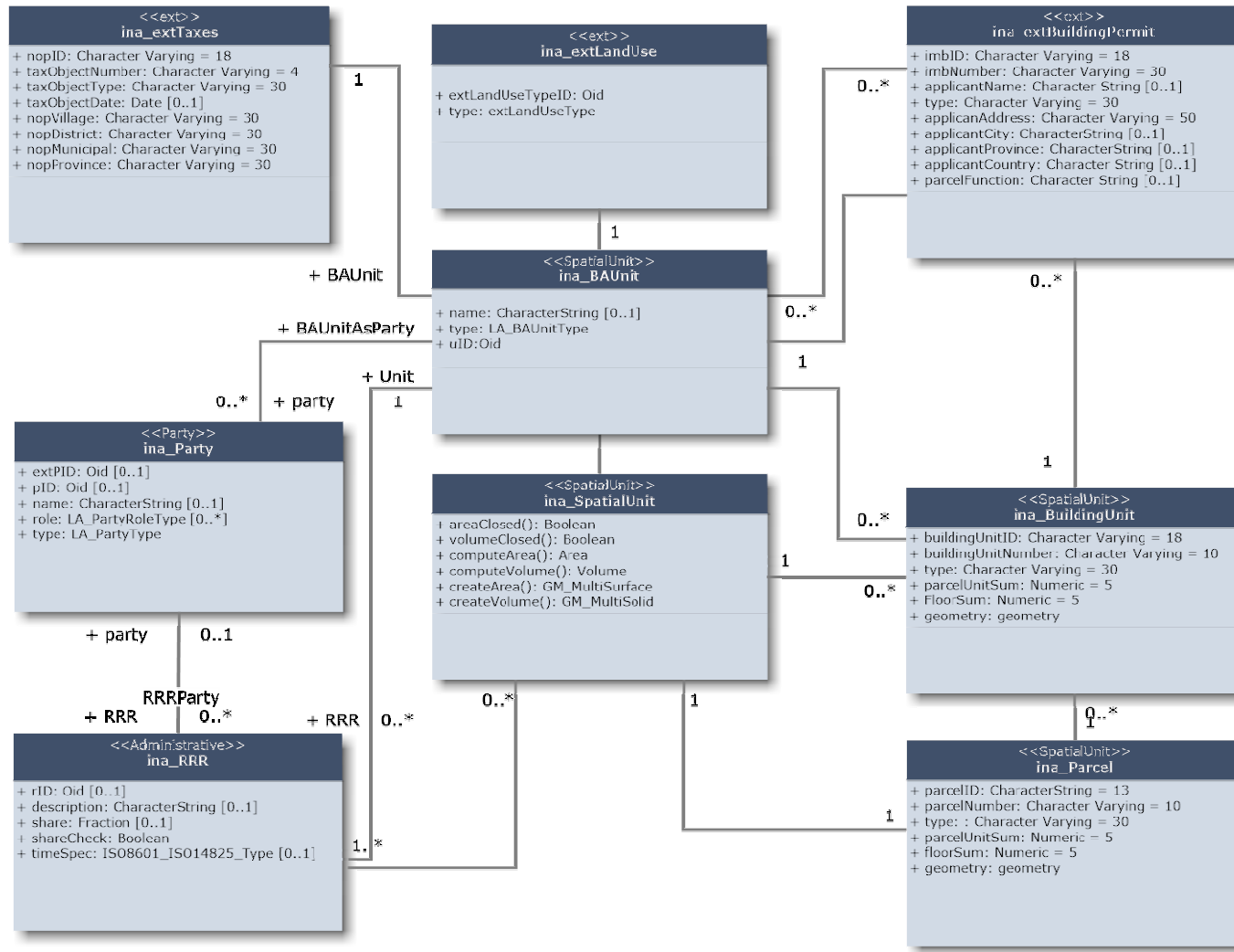
# Cadastral Data Management

## Indonesian Profile: Spatial



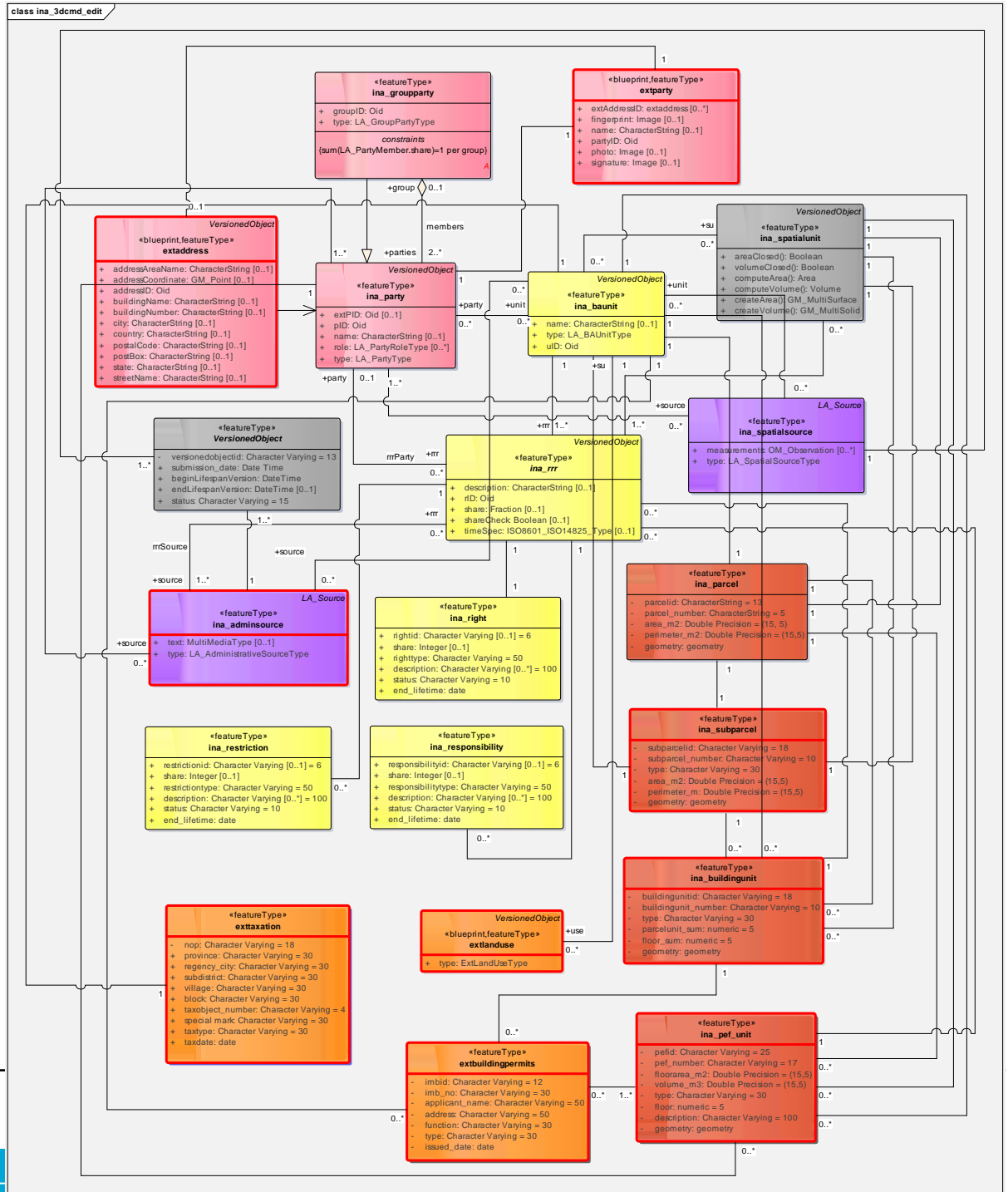
# Cadastral Data Management

## Indonesian 3D LADM Profile+(Finance+Legal+Planning)



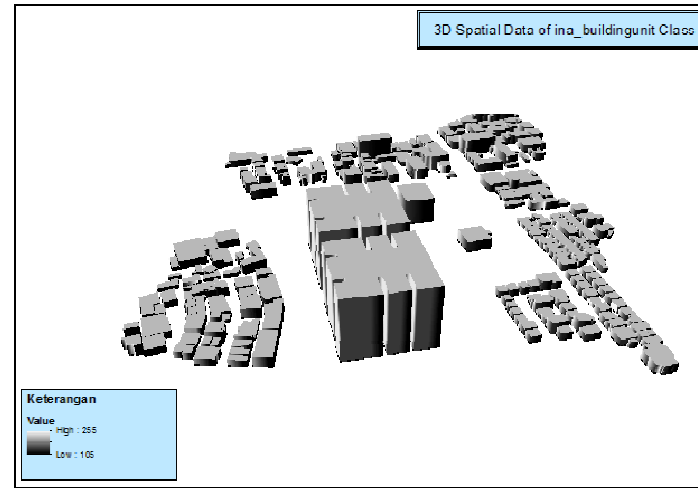
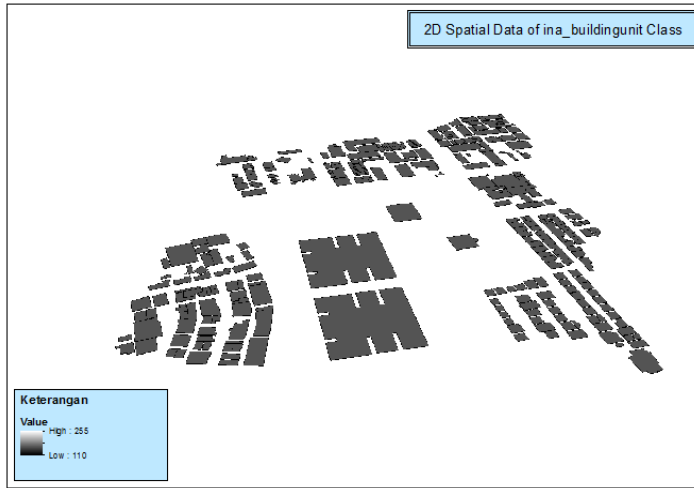
# Cadastral Data Management Indonesian Profile

comparison to existing study at Center for SDI at ITB

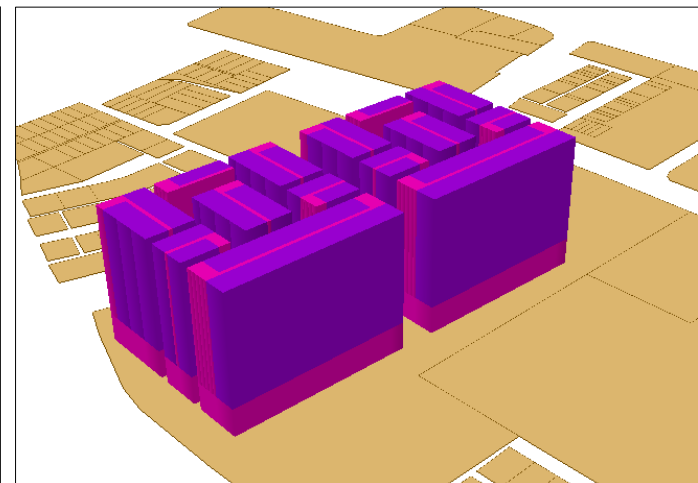
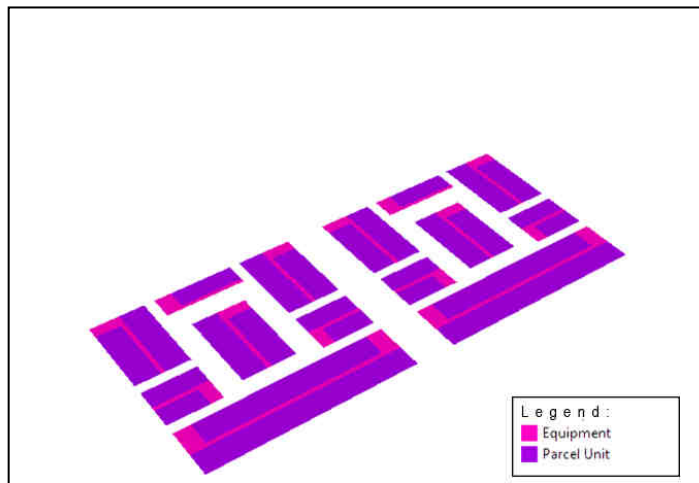


# Cadastral Data Management

## With Indonesian 3D LADM Profile



Law No.20/2011: building consist of function: main function, equipment, and facility



# Cadastral Data Management

## Land Information System and SDI in Indonesia

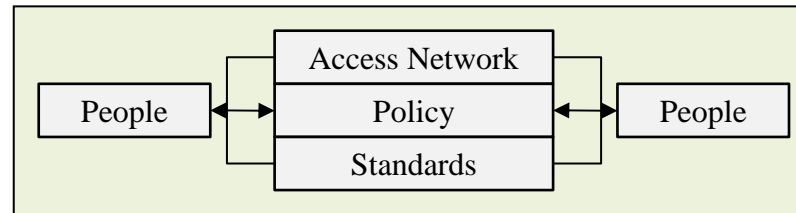


Fig. 6: Nature and Relations  
between SDI components  
(Rajabifard, 2001)

Land Information System	SDI Approach
<i>LADM</i>	Standards
<i>Information infrastructure</i>	Access Network
	Data
<i>Land Policies</i>	Policies
<i>Institutional framework</i>	People

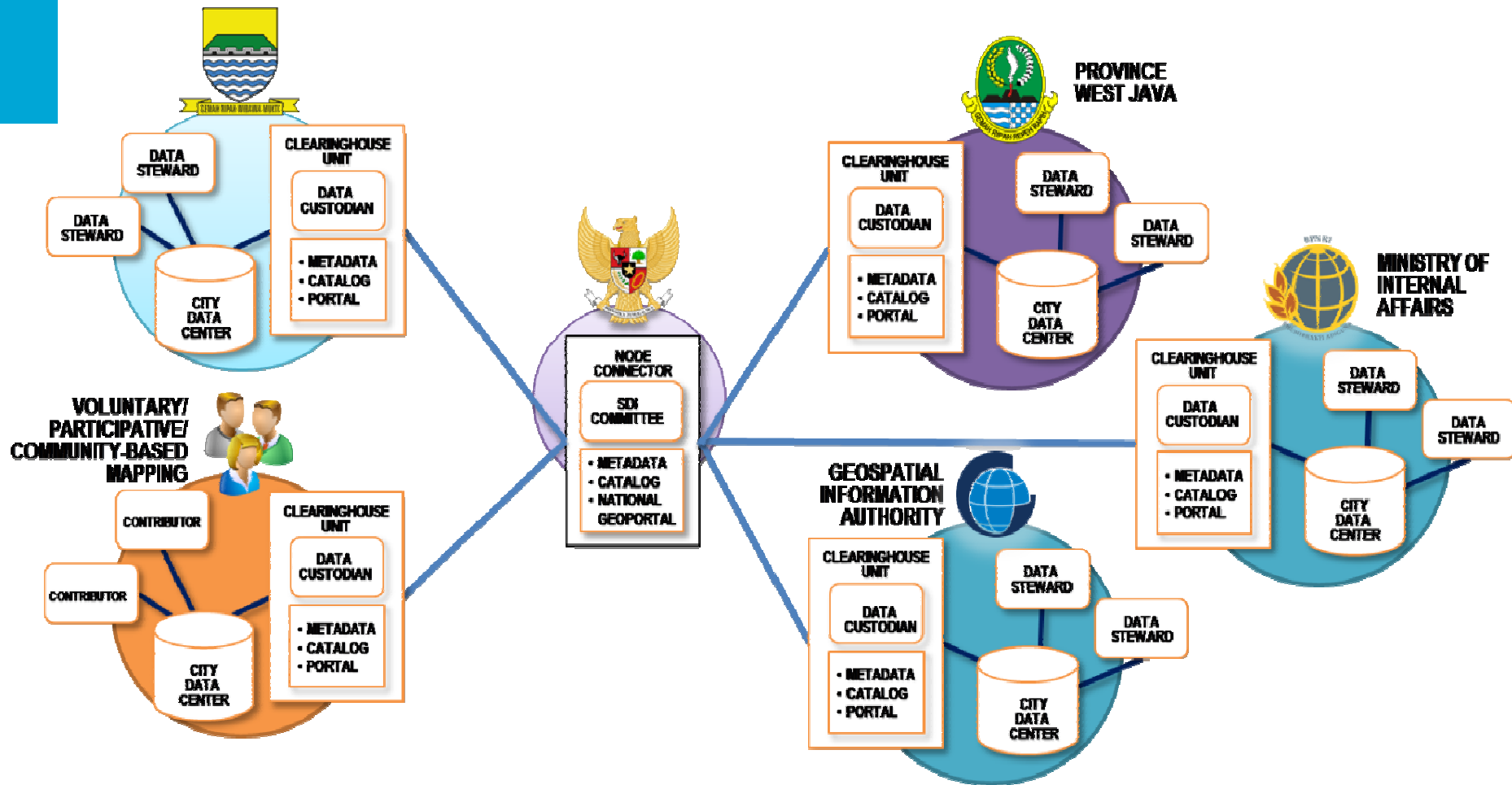
# Cadastral Data Management

## Land Information System and SDI in Indonesia

Geospatial Information	Approach	
	Technical	Non-technical
Cadastral Layers	Information systems: collecting, managing, and distribution of cadastral and registry layers on national systems	<i>National Land Agency</i>
		<i>Cadastral and Land Registry Layers At Cadastral Offices and Organizations</i>
Other Geospatial Layers	Information Infrastructure: developing, maintaining, and facilitating data sharing	As a Clearinghouse to Indonesian SDI
		Regulations, Agreements, Capacity Building

# Cadastral in Indonesian SDI

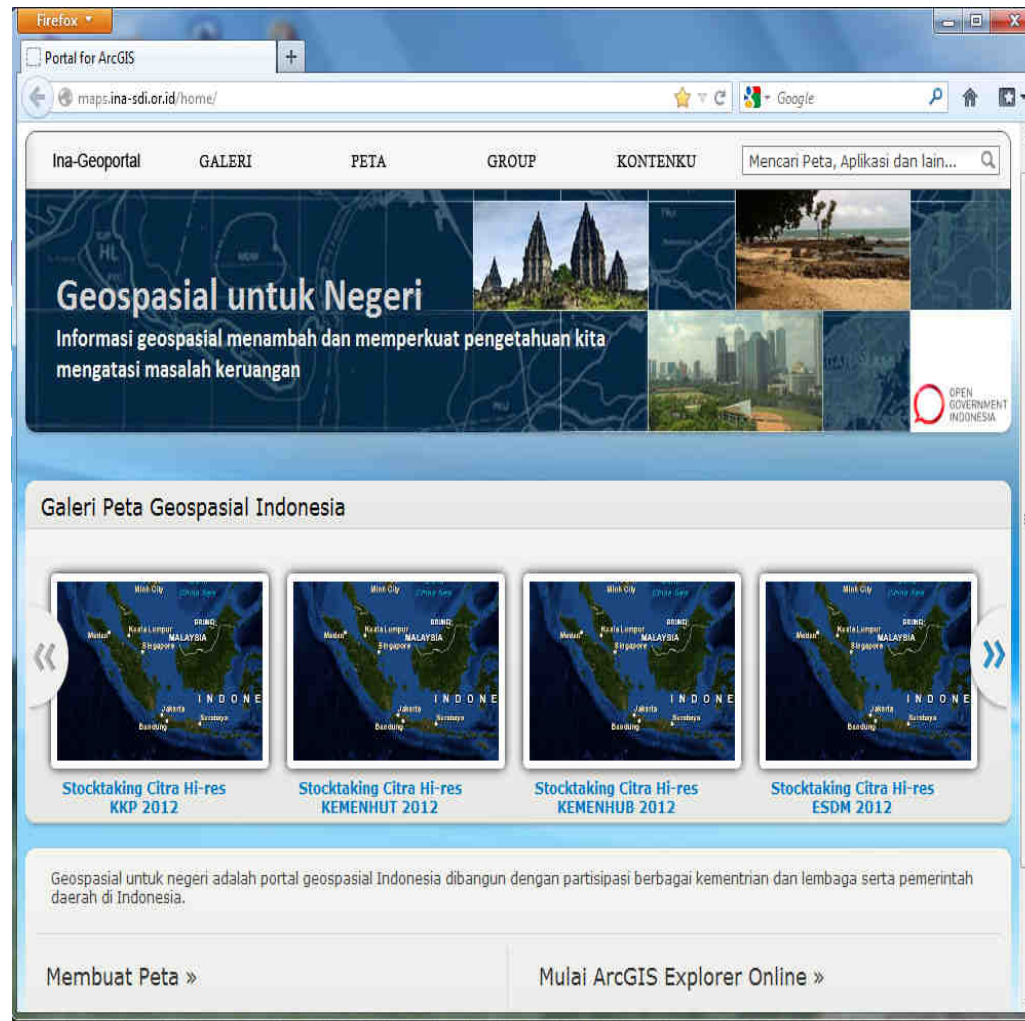
## Geospatial Information Sharing facilities



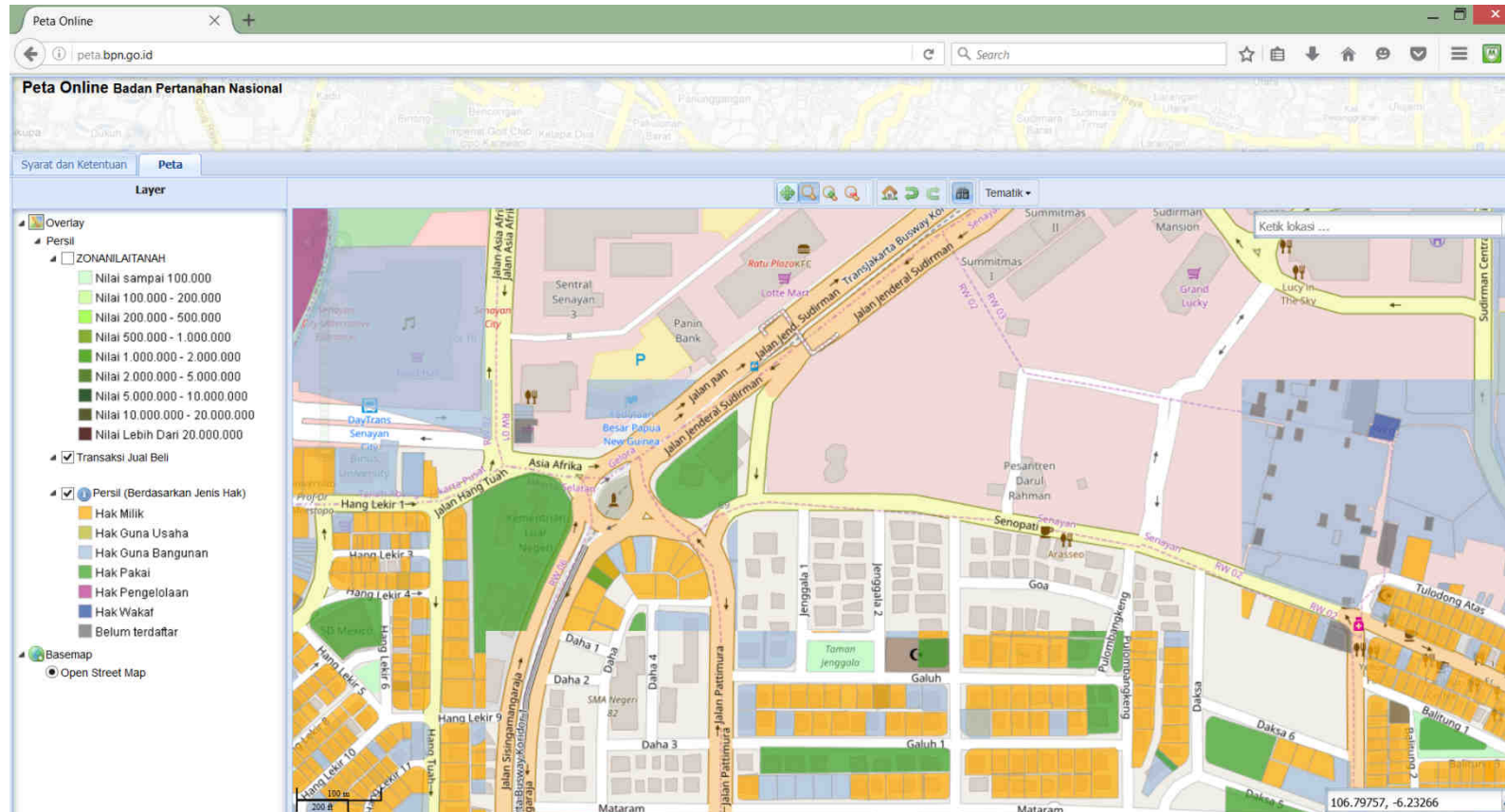


# Geospatial Information in Open Government Indonesia:

Indonesan SDI Geoportal - <http://tanahair.indonesia.go.id>



# Geospatial Information in Open Government Indonesia: Cadastral WebGIS: <http://peta.bpn.go.id>



# **Toward 3D Cadastre Management in Indonesia:** **A Temporary Conclusion and Suggestion**

1. Institutional Arrangement for Land Administration and Building Data Management (National Land Agency, National Geospatial Information Authority, and Local Government)
2. City government should be promoted as Data Steward to Land Tenure, Land Values (incl. Taxation), and Land Use (incl. Planning, Environment, Maintenance) to get better decision making and giving services to its citizen and to detect changes in Cities.
3. LADM Standardization should be able to accommodate/linked to Finance, Legal, and Planning information/databases.
4. Urgency for cities to have 3D City Model for 3D cadastre and ability to manage Land Information System.

# Toward 3D Cadastre Management in Indonesia: A Temporary Conclusion and Suggestion

Class	Note
<i>SubParcel</i>	A class for parcel block, which has special utilization
<i>BuildingUnit</i>	A class for building unit
<i>SubBuildingFunction</i>	A class for sub building function such as offices, equipment unit, and facility unit
<i>extBuildingPermit</i>	A class for the external registration of building permit
<i>extTaxes</i>	A class for the external registration of taxation data
<i>extParty</i>	A class for an external registration of parties
<i>extAddress</i>	A class for an external registration of addresses
<i>extLandUse</i>	A class for an external registration of Land Use Data
<i>spatialSource</i>	A subclass for class LA_Source to store simple information of data



# Thank You