

## International code list management - The case of Land Administration

Erik Stubkjær, Jesper M. Paasch, Volkan Çağdaş, Peter van Oosterom,  
Scott Simmons, Jenny Paulsson and Christiaan Lemmen



**UNIVERSITY OF TWENTE.**

7<sup>th</sup> International FIG workshop on the Land Administration Domain Model  
12-13 April 2018, Zagreb, Croatia

# What is a code list ?

**<< codeList >>**

**Ice Cream::  
IceCreamFlavour**

- + Bacon**
- + Bastani Sonnati**
- + Black walnut**
- + Blue moon**
- + Cherry**
- + Chocolate**
- + Coconut milk**
- + French vanilla**
- + Grape**
- + Mango**
- + Mint**
- + Pistachio**
- + Stracciatella**
- + Vanilla**

# Why code lists for land administration?

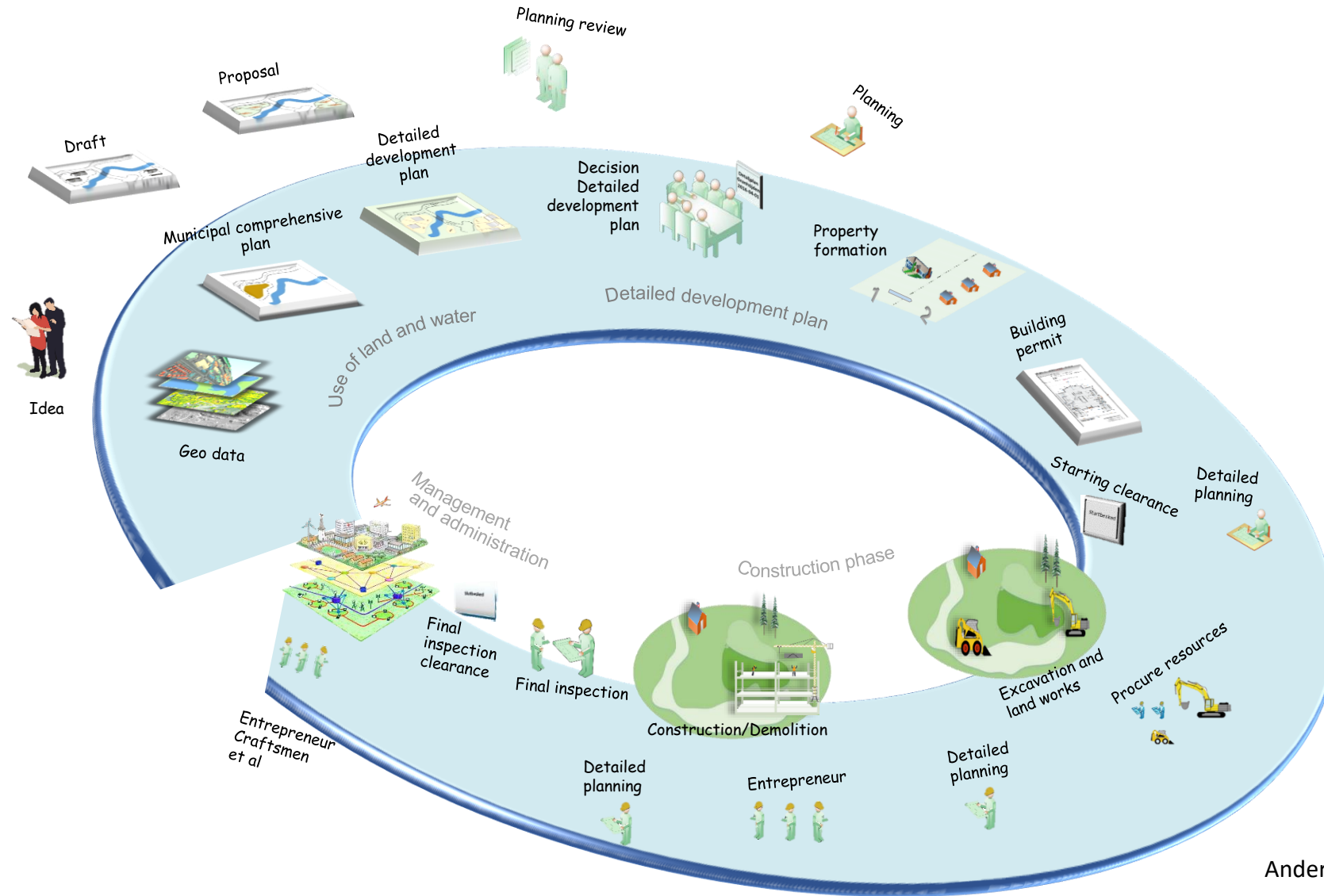


www.lant

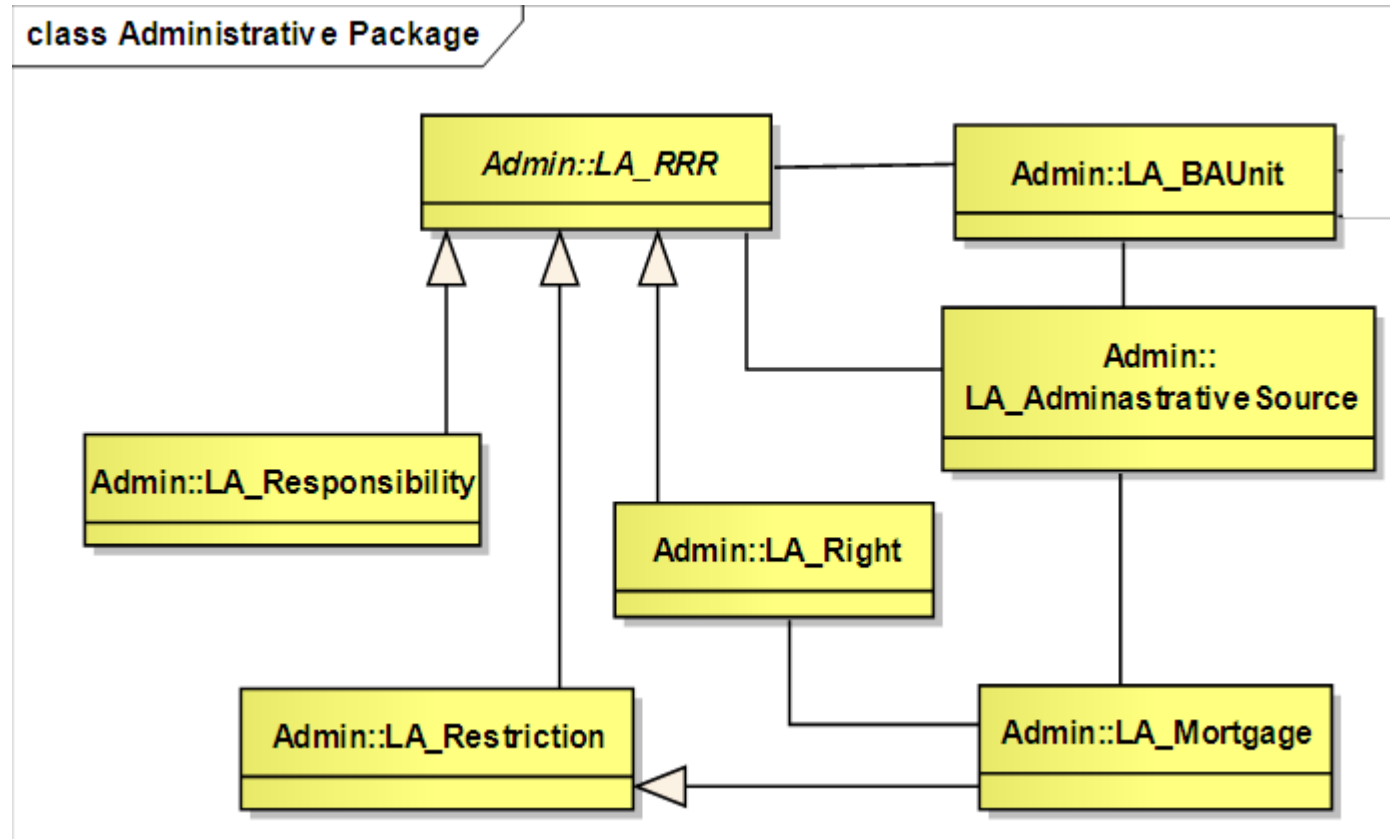
visitasnen.s

The Social Tenure Domain model. [www.fig.net](http://www.fig.net)

# Terms are used everywhere, e.g. in the planning and building process



# LADM: Administrative package



**Right**

”action, activity or class of actions that a system participant may perform on or using an associated resource”

**Restriction**

”formal or informal obligation to refrain from doing something”

**Responsibility**

”formal or informal obligation to do something”



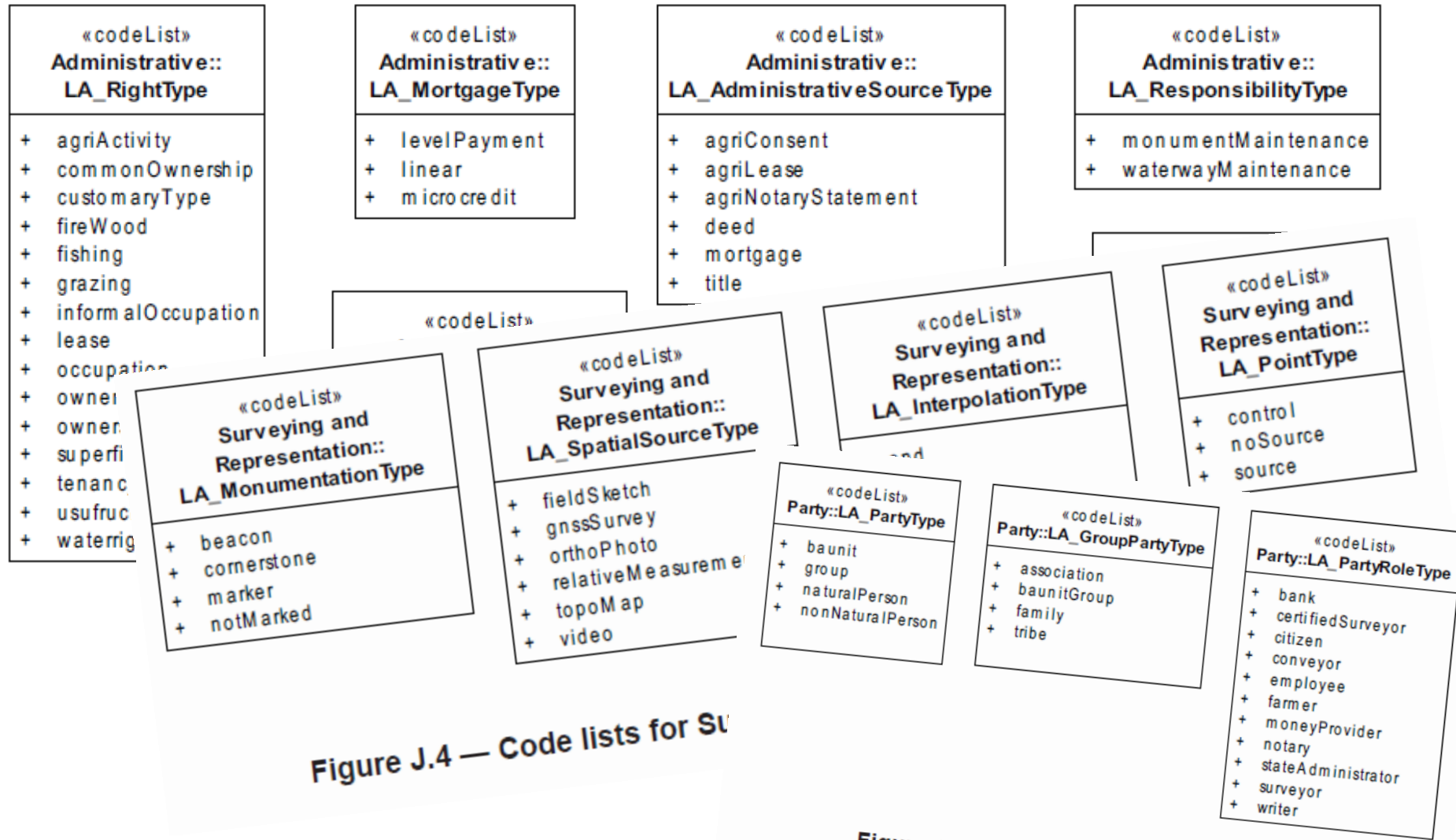


Figure J.4 — Code lists for S&R

Figure J.1 — Code lists for Party/Package



# Many non-LADM code lists exist. Examples are:



## Cadastre and Land Administration Thesaurus (CaLAThe)

- Registers
- Registered Items
- Models and Schema

- Homepage
- General overview
- Alpha
- Graphical
- Tabular
- Query / Test
- About us



- Welcome
- ISO Geodetic Register
- Coordinate Reference Systems
- Coordinate Systems
- Datums
- Coordinate Operations
- Other

The image shows a screenshot of the INSPIRE Registry website. At the top, there are navigation options "query by filter" and "retrieve by code", and a welcome message "Welcome to the EPSG Geodetic Parameter Dataset". Below this is the European Commission logo and the text "INSPIRE Registry". A breadcrumb trail reads "European Commission &gt; INSPIRE &gt; INSPIRE registry &gt; INSPIRE theme register". There is a search bar and a language dropdown set to "English (en)". A blue banner contains the text "Help us improving the Re3gistry software! Please fill our quick survey at http://europa.eu/IBr...". The main content area is titled "INSPIRE theme register" and contains a table of themes.

**INSPIRE theme register**

**ID:** <http://inspire.ec.europa.eu/theme>

**Label:** **INSPIRE theme register**

**Content Summary:** The INSPIRE theme register contains all spatial data themes defined in the Directive 2007/2/EC of the European Parliament and of the Council of 15 March 2007 on the Spatial Information in the European Community (INSPIRE) and the Definition of Annex Themes and Scope (D 2.3) by the INSPIRE Thematic Working Groups (TWGs).

**Owner:** **European Union**

**Register manager:** **European Commission, Joint Research Centre**

**Control body:** **Control body for the central INSPIRE registers and INSPIRE Thematic Working Groups**

**Submitter:** **Nominated submitting organisations for the central INSPIRE registers**

**Contact point:** [JRC INSPIRE Registry Team](#)

**Licence:** [Europa Legal Notice](#)

Filter Label	Label	Status
<input checked="" type="checkbox"/> Show only valid items		
	Addresses	Valid
	Administrative units	Valid
	Agricultural and aquaculture facilities	Valid
	Area management/restriction/regulation zones and reporting units	Valid
	Atmospheric conditions	Valid
	Bio-geographical regions	Valid
	Buildings	Valid
	Cadastral parcels	Valid
	Coordinate reference systems	Valid
	Elevation	Valid
	Energy resources	Valid
	Environmental monitoring facilities	Valid
	Geographical grid systems	Valid
	Geographical names	Valid
	Geology	Valid
	Habitats and biotopes	Valid
	Human health and safety	Valid
	Hydrography	Valid
	Land cover	Valid
	Land use	Valid

## ISO

## OGC (Open Geospatial Consortium)

LADM Code Lists	<u>LandInfra</u> Code Lists
<p><b>6.3.4 Party Package</b> <u>LA_PartyRoleType</u> <u>LA_GroupPartyType</u> <u>LA_PartyType</u></p> <p><b>6.4.9 Administrative Package</b> <u>LA_AdministrativeSourceType</u> <u>LA_MortgageType</u> <u>LA_RightType</u> <u>LA_RestrictionType</u> <u>LA_ResponsibilityType</u> <u>LA_AvailabilityStatusType</u> <u>LA_BAUnitType</u></p> <p><b>6.5.8 Spatial Unit Package</b> <u>LA_BuildingUnitType</u> <u>LA_AreaType</u></p>	<p><b><u>7.2 Core</u></b> <u>DocumentType</u> <u>ProfessionalType</u></p> <p><b><u>7.8 Survey</u></b> <u>SurveyType</u> <u>SurveyResultType</u></p> <p><b><u>7.9 LandFeature</u></b> <u>LandElementType</u></p> <p><b><u>7.10 LandDivision</u></b> <u>DimensionType</u> <u>EasementType</u></p>

# The OGC code list manifesto

Proposing four code list types or cases, based on ISO 19103:2015, GML 3.2.1 and GML 3.3

## **Case 0 (No list)**

*No list of values*

## **Case 1 (Enumeration)**

*Complete (non-extensible) list of values*

## **Case 2 (Union Type)**

*None or only a few of the allowed values. Other unique values can be added by the implementing body*

## **Case 3 (Reference Type)**

*None or only a few of the allowed values. Unique values appear from URI-referenced list(s) provided by another body than the organization who issues the standard. Such body is dubbed an 'external authority'*

## ISO standards related to different aspects of terminology

ISO 1087-1:2000 Terminology work -- Vocabulary -- Part 1: Theory and application.

ISO 860:2007 Terminology work -- Harmonization of concepts and terms.

ISO 1951:2007 Presentation/representation of entries in dictionaries -- Requirements, recommendations and information.

ISO 704:2009 Terminology work -- Principles and methods.

ISO 23185:2009 Assessment and benchmarking of terminological resources -- General concepts, principles and requirements.

ISO 29383:2010 Terminology policies -- Development and implementation.

ISO 10241-1:2011 Terminological entries in standards -- Part 1: General requirements and examples of presentation.

ISO 26162:2012 Systems to manage terminology, knowledge and content -- Design, implementation and maintenance of terminology management systems.

ISO 22274:2013 Systems to manage terminology, knowledge and content -- Concept-related aspects for developing and internationalizing classification systems.

ISO 24156-1:2014 Graphic notations for concept modelling in terminology work and its relationship with UML -- Part 1: Guidelines for using UML notation in terminology work.

ISO 19104:2016 Geographic information – Terminology.

**Who decides which codes and definitions to use ?**

# A **joint** code list manifesto is needed!

For example :

## ***Draft Memorandum of Understanding***

[This draft is prepared as an academic exercise and does in no way imply the consent of the parties mentioned]

### **Memorandum of Understanding**

between the signing parties:

International Organization for Standardization (ISO/TC 211),

Open Geospatial Consortium (OGC),

International Federation of Surveyors (FIG),

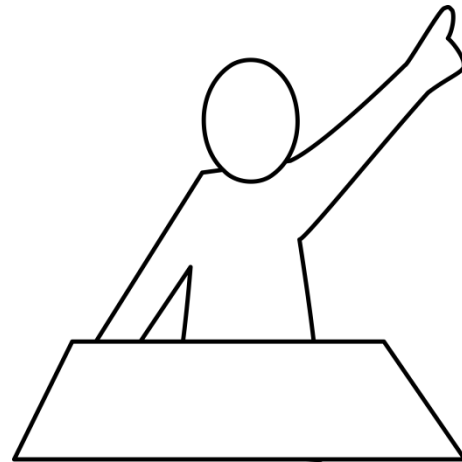
+ ???

### **concerning joint code list management**

See appendix 1



Thank you!



Questions?